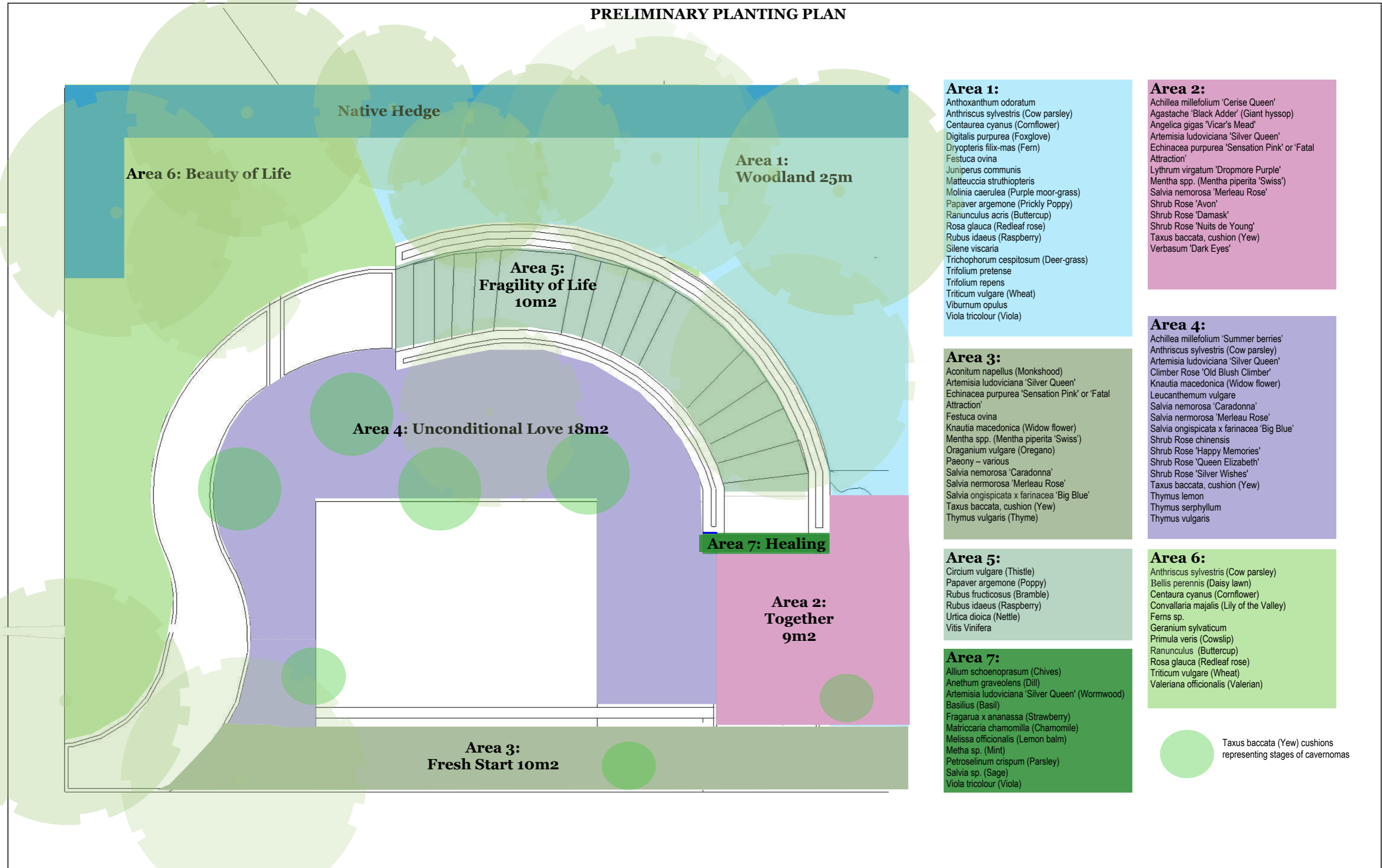


PRELIMINARY PLANTING PLAN



**Area 1:**

- Anthoxanthum odoratum
- Anthriscus sylvestris (Cow parsley)
- Centaurea cyanus (Cornflower)
- Digitalis purpurea (Foxglove)
- Dryopteris filix-mas (Fern)
- Festuca ovina
- Juniperus communis
- Matteuccia struthiopteris
- Molinia caerulea (Purple moor-grass)
- Papaver argemone (Prickly Poppy)
- Ranunculus acris (Buttercup)
- Rosa glauca (Redleaf rose)
- Rubus idaeus (Raspberry)
- Silene viscaria
- Trichophorum cespitosum (Deer-grass)
- Trifolium pretense
- Trifolium repens
- Triticum vulgare (Wheat)
- Viburnum opulus
- Viola tricolour (Viola)

**Area 2:**

- Achillea millefolium 'Cerise Queen'
- Agastache 'Black Adder' (Giant hyssop)
- Angelica gigas 'Vicar's Mead'
- Artemisia ludoviciana 'Silver Queen'
- Echinacea purpurea 'Sensation Pink' or 'Fatal Attraction'
- Lythrum virgatum 'Dropmore Purple'
- Mentha spp. (Mentha piperita 'Swiss')
- Salvia nemorosa 'Merleau Rose'
- Shrub Rose 'Avon'
- Shrub Rose 'Damask'
- Shrub Rose 'Nuits de Young'
- Taxus baccata, cushion (Yew)
- Verbasum 'Dark Eyes'

**Area 4:**

- Achillea millefolium 'Summer berries'
- Anthriscus sylvestris (Cow parsley)
- Artemisia ludoviciana 'Silver Queen'
- Climber Rose 'Old Blush Climber'
- Knautia macedonica (Widow flower)
- Leucanthemum vulgare
- Salvia nemorosa 'Caradonna'
- Salvia nemorosa 'Merleau Rose'
- Salvia ongispicata x farinacea 'Big Blue'
- Shrub Rose chinensis
- Shrub Rose 'Happy Memories'
- Shrub Rose 'Queen Elizabeth'
- Shrub Rose 'Silver Wishes'
- Taxus baccata, cushion (Yew)
- Thymus lemon
- Thymus serpyllum
- Thymus vulgaris

**Area 3:**

- Aconitum napellus (Monkshood)
- Artemisia ludoviciana 'Silver Queen'
- Echinacea purpurea 'Sensation Pink' or 'Fatal Attraction'
- Festuca ovina
- Knautia macedonica (Widow flower)
- Mentha spp. (Mentha piperita 'Swiss')
- Origanum vulgare (Oregano)
- Paeony - various
- Salvia nemorosa 'Caradonna'
- Salvia nemorosa 'Merleau Rose'
- Salvia ongispicata x farinacea 'Big Blue'
- Taxus baccata, cushion (Yew)
- Thymus vulgaris (Thyme)

**Area 5:**


- Cirsium vulgare (Thistle)
- Papaver argemone (Poppy)
- Rubus fruticosus (Bramble)
- Rubus idaeus (Raspberry)
- Urtica dioica (Nettle)
- Vitis Vinifera

**Area 6:**

- Anthriscus sylvestris (Cow parsley)
- Bellis perennis (Daisy lawn)
- Centaurea cyanus (Cornflower)
- Convallaria majalis (Lily of the Valley)
- Ferns sp.
- Geranium sylvaticum
- Primula veris (Cowslip)
- Ranunculus (Buttercup)
- Rosa glauca (Redleaf rose)
- Triticum vulgare (Wheat)
- Valeriana officinalis (Valerian)

**Area 7:**

- Allium schoenoprasum (Chives)
- Anethum graveolens (Dill)
- Artemisia ludoviciana 'Silver Queen' (Wormwood)
- Basilus (Basil)
- Fragaria x ananassa (Strawberry)
- Matricaria chamomilla (Chamomile)
- Melissa officinalis (Lemon balm)
- Metha sp. (Mint)
- Petroselinum crispum (Parsley)
- Salvia sp. (Sage)
- Viola tricolour (Viola)

 Taxus baccata (Yew) cushions representing stages of cavernomas